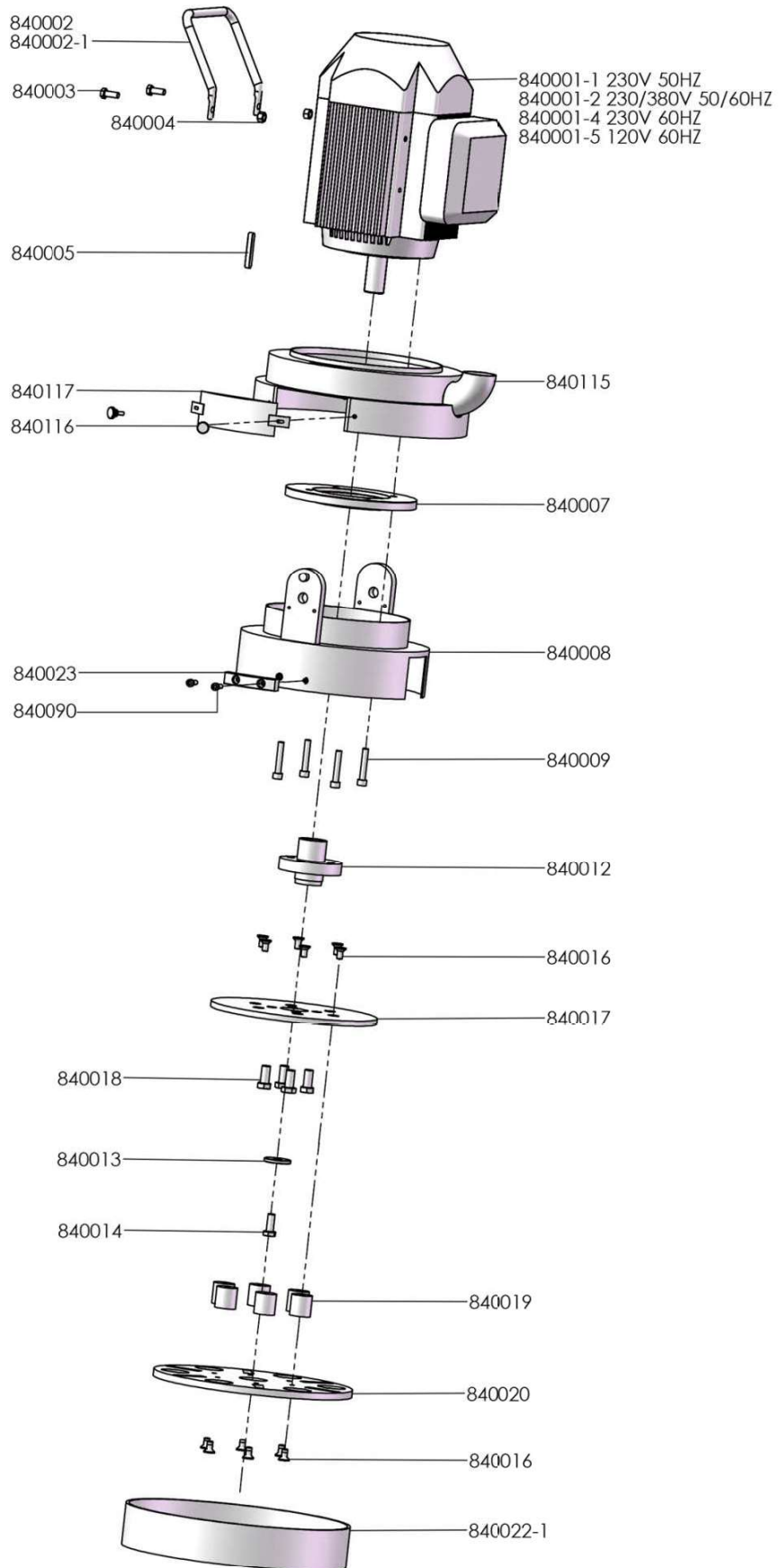


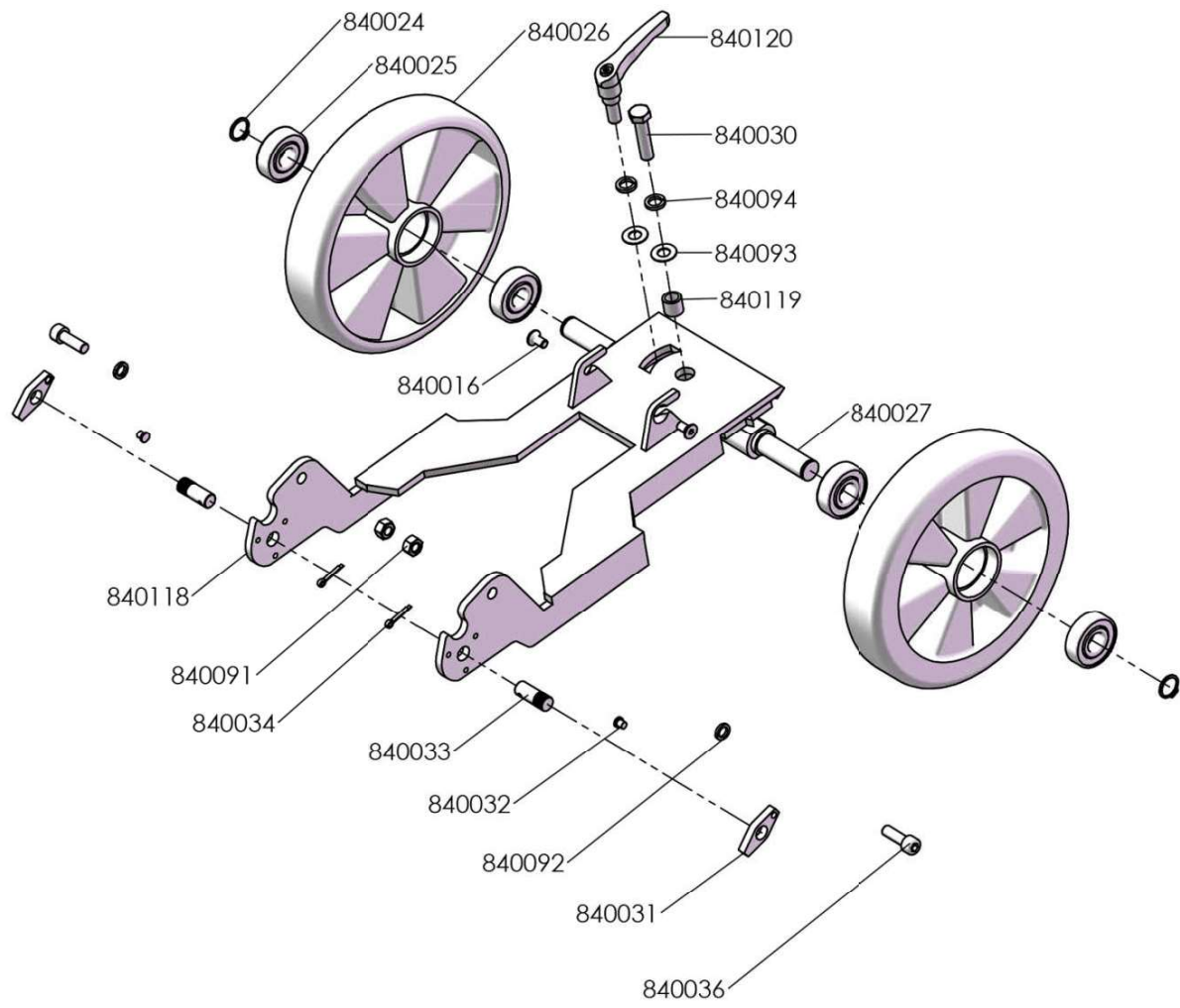
# A Grinding Head



Part A Grinding Head

Ref	Part No	Description	Remark	QYT
1	840001-1	El. Mot 230V 50Hz 1P 2.2kW		1
2	840001-2	El. Mot 230V 50/60HZ 3P 2.2KW		1
3	840001-4	El. Mot 230V 60HZ 1P 2.2KW		1
4	840001-5	El. Mot 120V 60Hz 1P 1.1kW		1
5	840002	Motor handle		1
6	840002-1	Motor handle	840001-2	2
7	840003	Hex screw M8x20		2
8	840004	Nut M8		2
9	840005	Shaft key 8x7x45		1
10	840007	Motor flange		1
11	840008	Guidance dust cover		1
12	840009	Socket screw M8x45		4
13	840012	Flange		1
14	840013	Washer M10		1
15	840014	Hex screw M10x25		1
16	840016	Socket screw M8x16		12
17	840017	Connection plate		1
18	840018	Hex screw M12x25		4
19	840019	Damping block		6
20	840020	Grinding plate RL tools		1
21	840022-1	Brush		1
22	840023	Protective strip		2
23	840090	Socket screw M6x16		4
24	840115	Dust cover		1
25	840116	Knurled screw M5x12		4
26	840117	Edge cover		2

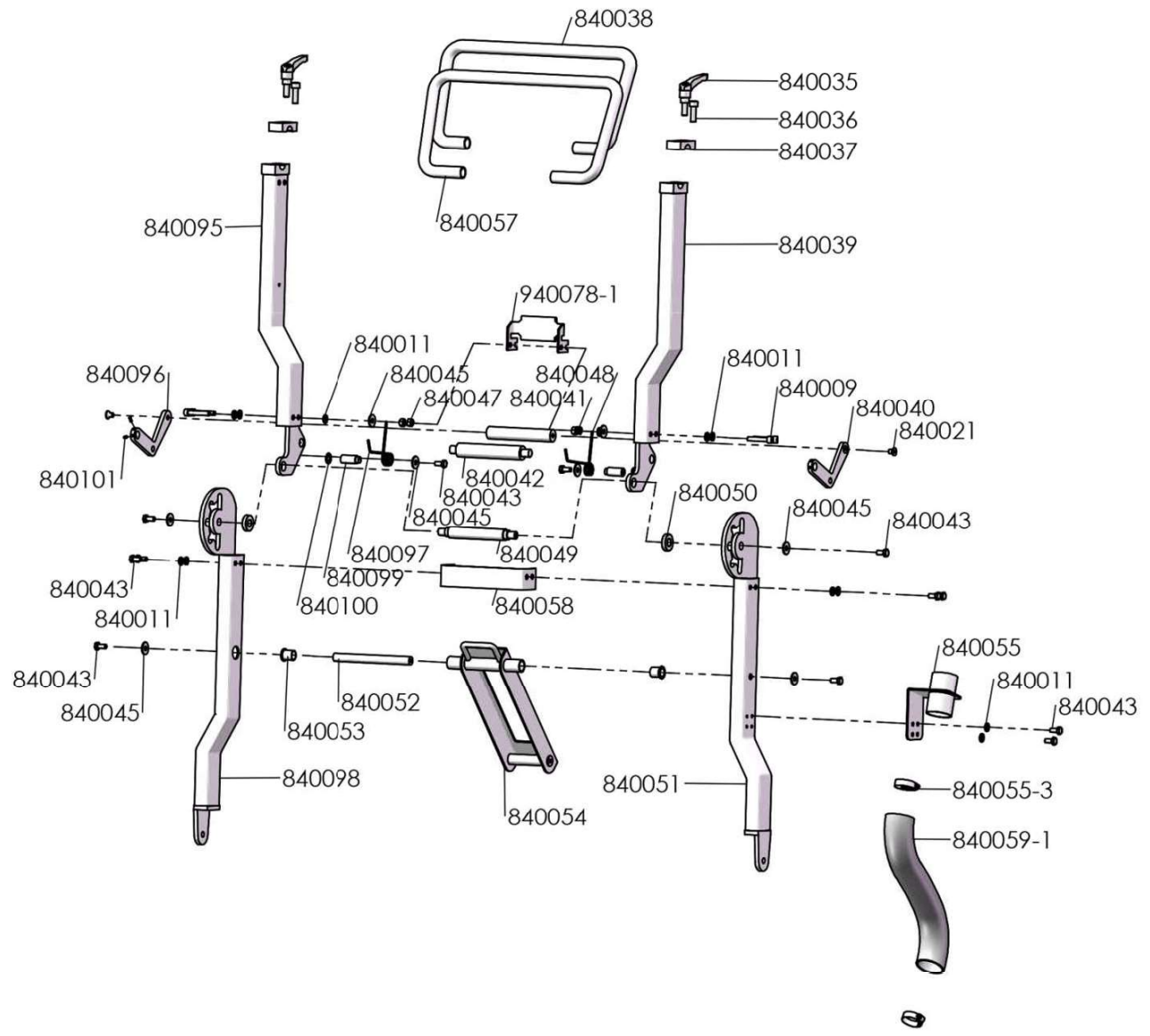
# B Chassis



Part B Chassis

Ref	Part No	Description	Remark	QYT
1	840016	Socket screw M8x16		2
2	840024	Circlip shaft dia 20		2
3	840025	Gr. Ball bearing 6204		4
4	840026	Wheel dia 250		2
5	840027	Wheel axle		1
6	840030	Hex screw M12x50		1
7	840031	Locking lever		2
8	840032	Spring catch		2
9	840033	Locking screw		2
10	840034	Cotter pin		2
11	840036	Socket screw M10x30		2
12	840091	Nut M10		2
13	840092	Washer lock M10		2
14	840093	Washer M12		2
15	840094	Washer lock M12		2
16	840118	Chassis		1
17	840119	Socket		1
18	840120	Clamping lever M12x50		1

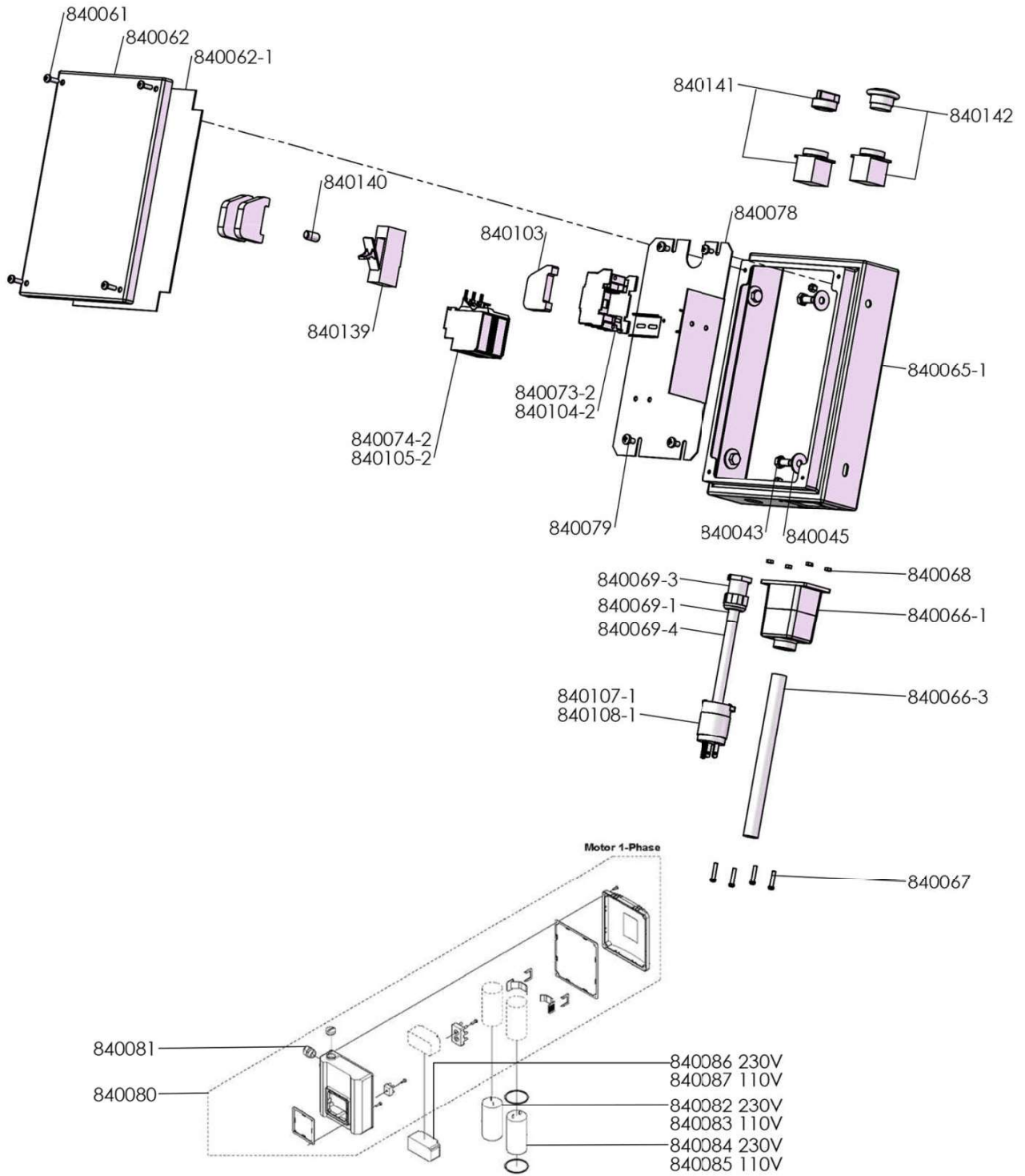
# C Frame



Part C Frame

Ref	Part No	Description	Remark	QYT
1	840009	Socket screw M8x45		4
2	840011	Washer M8		12
3	840021	Socket screw M8x12		2
4	840035	Clamping lever M10x30		2
5	840036	Socket screw M10x30		2
6	840037	Clamping block		2
7	840038	Handle		1
8	840039	Support top right		1
9	840040	Lever right		1
10	840041	Positioning axis		1
11	840042	Lever axis		1
12	840043	Hex screw M8x16		12
13	840045	Washer M8		8
14	840047	Nut lock M8		4
15	840048	Torsional spring right		1
16	840049	Bar		1
17	840050	Washer		2
18	840051	Support bottom right		1
19	840052	Support shaft		1
20	840053	Nylon sleeve		2
21	840054	Support plate		1
22	840055	Hose holder		1
23	840055-3	Hose Clamp		2
24	840057	Handle sleeve		1
25	840058	Support bar		1
26	840059-1	Hose		1
27	840095	Support top left		1
28	840096	Lever left		1
29	840097	Torsional spring left		1
30	840098	Support bottom left		1
31	840099	Spring shaft		2
32	840100	Washer M12		2
33	840101	Screw M4		4
34	940078-1	Bar		1

# D Electrical Parts



Part D Electrical

Ref	Part No	Description	Remark	QYT
1	840043	Hex screw M8x16		4
2	840045	Washer M8		4
3	840061	Cross screw M5x16		4
4	840062	Cover electric box		1
5	840062-1	Seal		1
6	840065-1	Electric box		1
7	840066-1	Plug/Receptacle		1
8	840066-3	Cable		1
9	840067	Cross screw M4x20		4
10	840068	Nut lock M4		4
11	840069-1	Hot melt pipe		1
12	840069-3	Cable grommet		1
13	840069-4	Cable		1
14	840073-2	Contactora	200-230V	1
15	840074-2	Relay		1
16	840078	Base plate electric		1
17	840079	Cross screw M6x10		4
18	840080	Motor electronic box		1
19	840081	Cable grommet		1
20	840082	Motor run. capacitor 230V		1
21	840083	Motor run. capacitor 110V		1
22	840084	Motor start.capacit. 230V		1
23	840085	Motor start.capacit. 110V		1
24	840086	El. centrif. switch 230V		1
25	840087	El. centrif. switch 110V		1
26	840103	Cover		3
27	840104-2	Contactora	100-120V	1
28	840105-2	Relay		1
29	840107-1	Plug	200-230V	1
30	840108-1	Plug	100-120V	1
31	840139	Fuse holder		1
32	840140	Fuse		1
33	840141	Emergency switch		1
34	840142	On/Off switch		1